

The October activities booklet

Monthly Edition

October 2025



Contents

Hidden word.....	Page 3
Logical continuation.....	Page 4
Sudokus.....	Page 5
Anagrams.....	Page 6
Search and find.....	Page 7
Secret code.....	Page 8
Logical sequence.....	Page 9
Secret word.....	Page 10
Color coding.....	Page 11
Solutions.....	Page 12

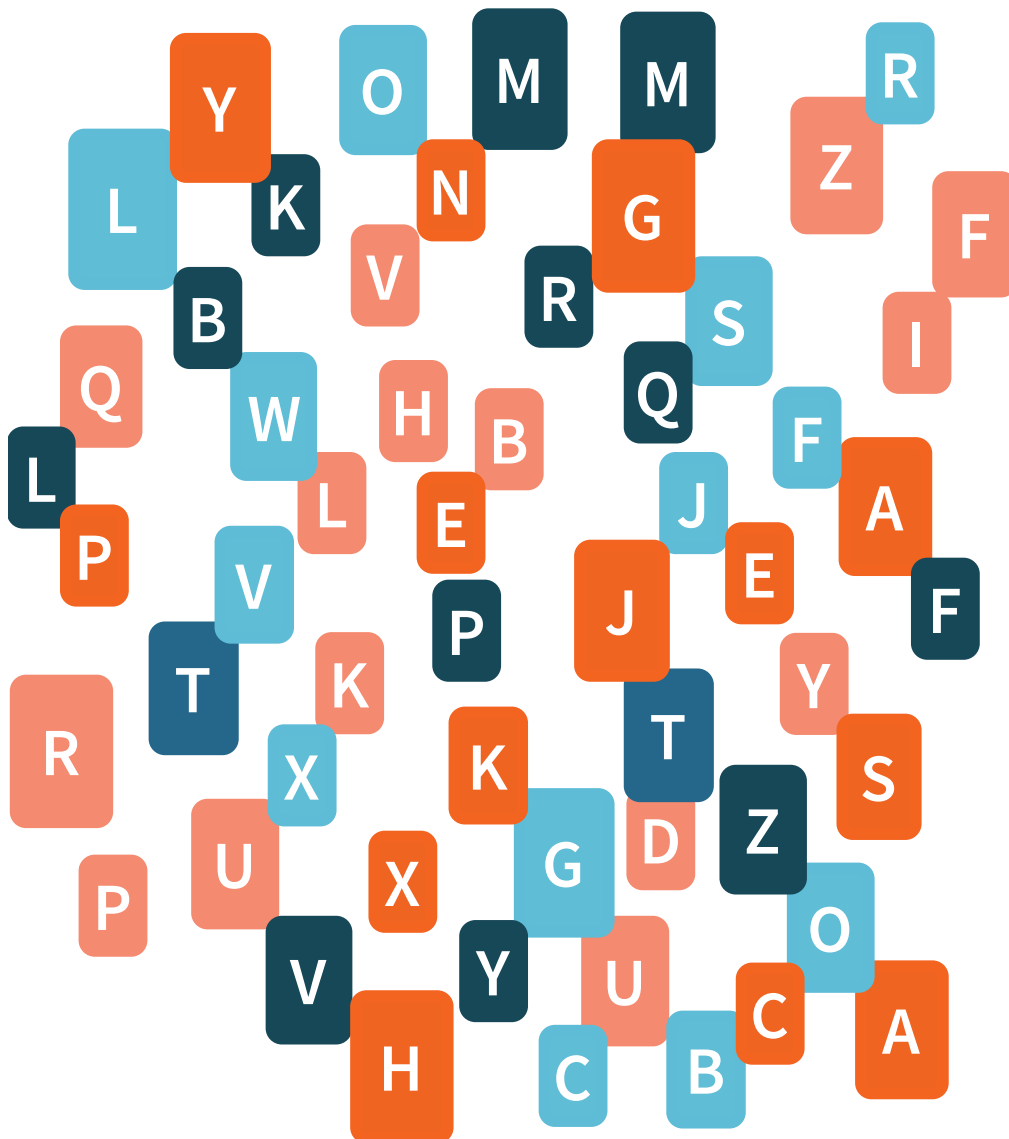
Difficulty



Hidden word

- Special fall -

Cross out any letters that appear more than once.
The remaining letters will form a word related to October.



HIDDEN WORD

Difficulty

Sudoku

Difficulty



Fill in the grid so that each row, column, and square contains all the numbers from 1 to 9, without repetition.

6			7	4				
	1			9	5			3
8			1	3			7	2
		9					6	
4		7	6	5	9	2		1
	6					7		
1	3			7	4			6
5			8	2			9	
				6	3			8

			8					
		1		4				7
	3	6		9			5	
5	8							3
		2				1		
1							9	6
	7			6		8	1	
3				5		2		
					4			



Anagrams

- Fall Special -

The letters of the autumn words below have been scrambled.
Put them back in the correct order to find the hidden words.

K	P	M	U	P	I	N
---	---	---	---	---	---	---



--	--	--	--	--	--	--

T	U	N	A	M	U
---	---	---	---	---	---



--	--	--	--	--	--

S	L	E	A	V	E
---	---	---	---	---	---



--	--	--	--	--	--

A	C	D	N	L	E
---	---	---	---	---	---



--	--	--	--	--	--

N	R	O	C	A
---	---	---	---	---



--	--	--	--	--

L	M	E	A	P
---	---	---	---	---



--	--	--	--	--

P	L	E	A	P
---	---	---	---	---



--	--	--	--	--

F	A	L	E
---	---	---	---



--	--	--	--

Difficulty



Search and find

- Fall special -

Seven mischievous little squirrels are hiding in the scene.
Look closely and observe every detail of autumn.





Secret code - Halloween special -

A secret Halloween message has been hidden in these keystrokes!
Each letter is encoded by two series of keystrokes.
Decode the message and discover the mystery phrase.

	1	2	3	4	5
1	A	B	C	D	E
2	F	G	H	I	J
3	L	M	N	O	P
4	Q	R	S	T	U
5	V	W	X	Y	Z

The Peck Code

The peck code was used by prisoners to communicate secretly.

Each letter is located in a 5×5 grid:
The first peck indicates the row.
The second peck indicates the column.

CODE TO BE DECIPHERED

44 42 24 13 25 / 34 42 / 44 42 15 11 44

REWRITE THE SENTENCE





Logical sequence

Difficulty



Find the solution by connecting the even numbers from 2 to 62 in ascending order.

		2	4	6	3	6	8	12	18
7	3	1	3	8	10	14	17	19	23
11	10	9	8	7	12	19	24	22	24
15	17	14	10	12	14	16	18	20	29
38	34	31	26	22	13	18	14	17	21
32	30	28	26	24	22	20	26	32	34
38	32	34	36	38	40	42	44	46	48
41	34	31	35	40	43	55	46	43	52
39	36	60	56	54	52	50	48	49	42
44	38	59	51	56	58	60	62		

Difficulty

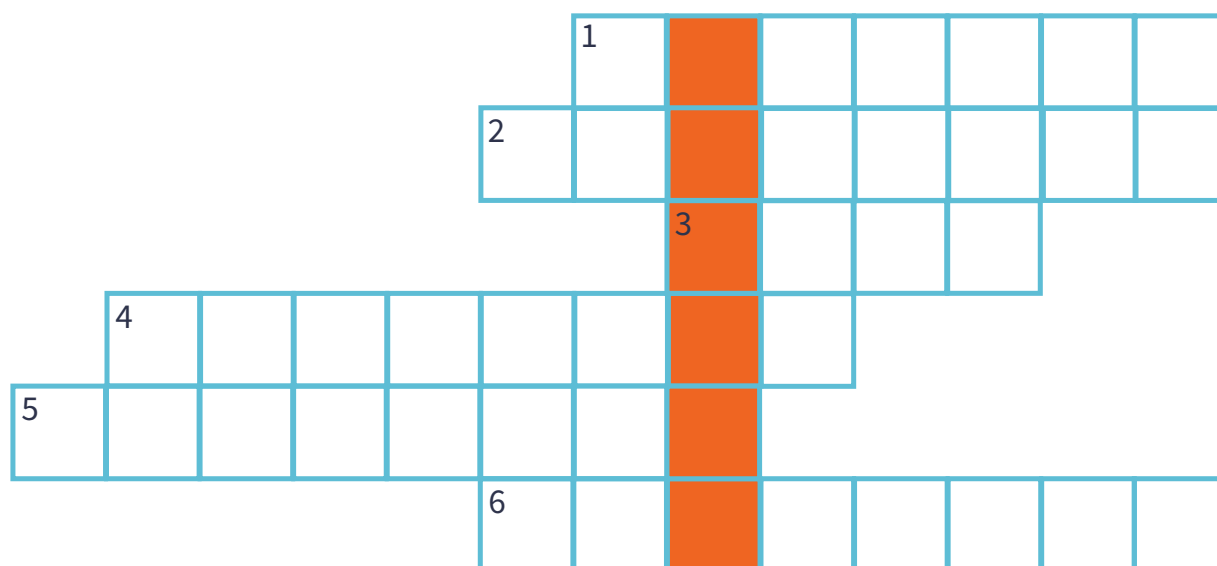


Secret word

- Fall special -

Fill in the blanks with words that match the definition and discover the secret word in the colored boxes.

1. Object that gives light in the dark, often made from a pumpkin
2. Small animal with a bushy tail, known for collecting nuts
3. Tall plant with leaves and branches where birds may nest
4. Brown nut, roasted and eaten warm during autumn
5. Small round fungus that grows in forests, sometimes edible
6. Woody cone from a pine tree, containing seeds

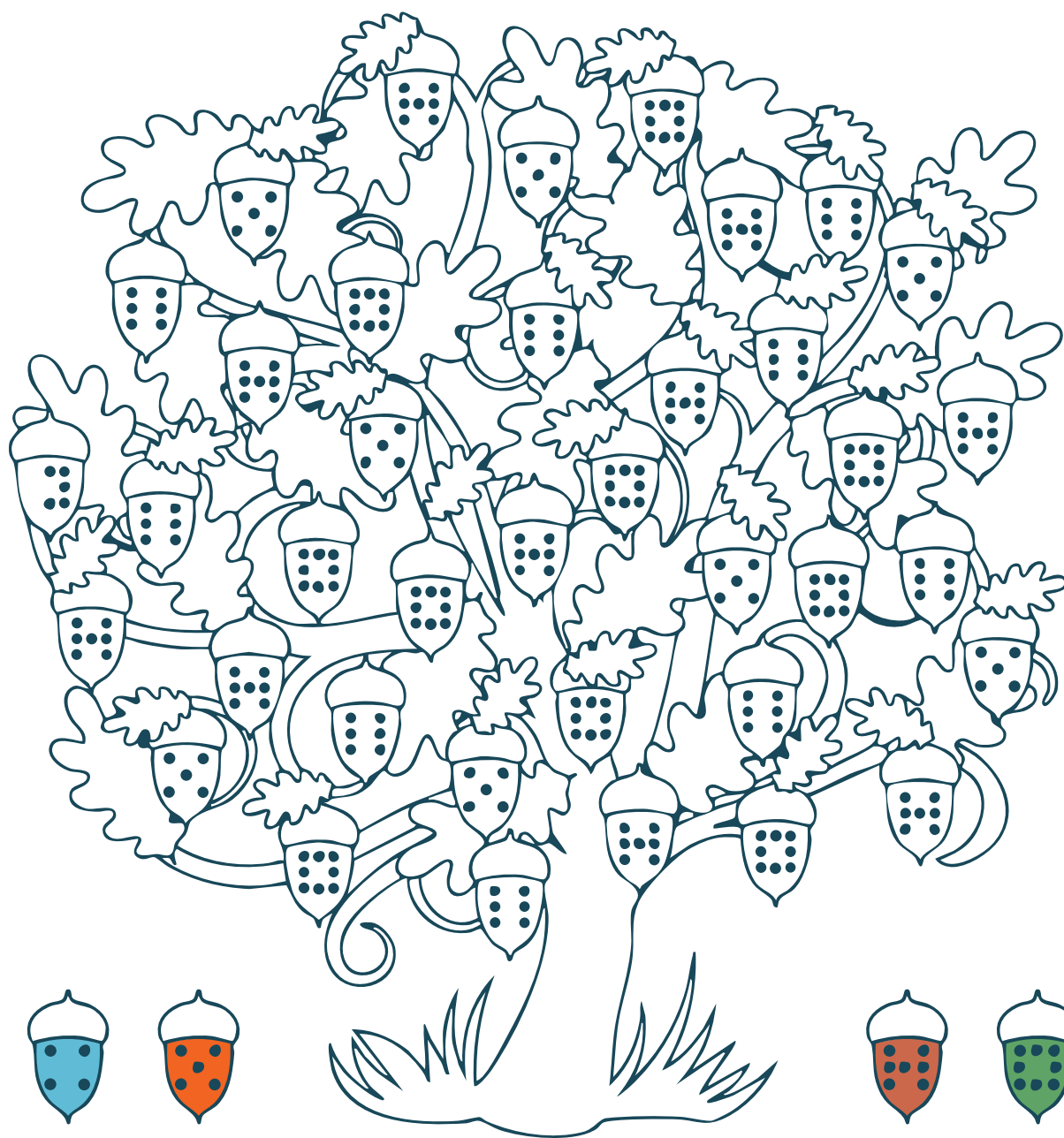


SECRET WORD

.....

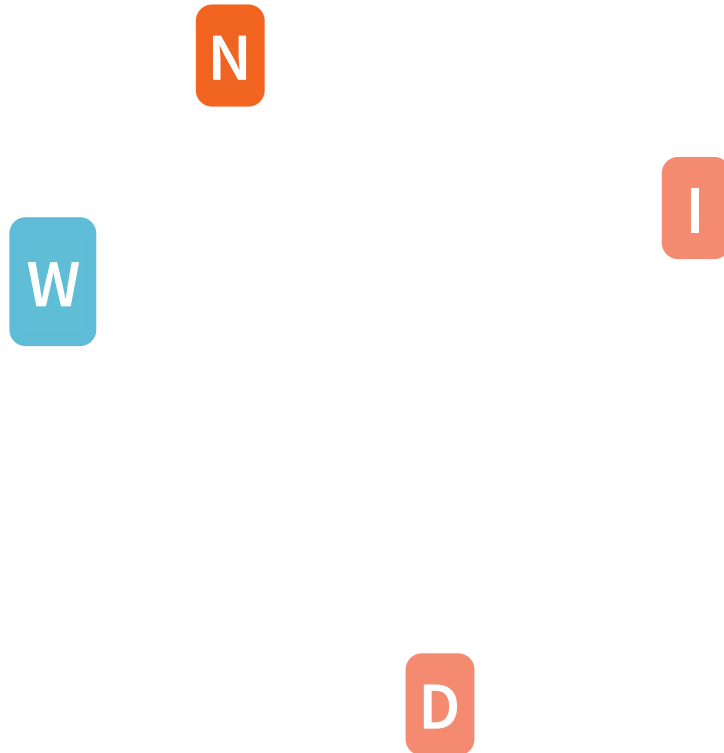
Color coding - Fall Special -

Difficulty



Hidden word

Solution

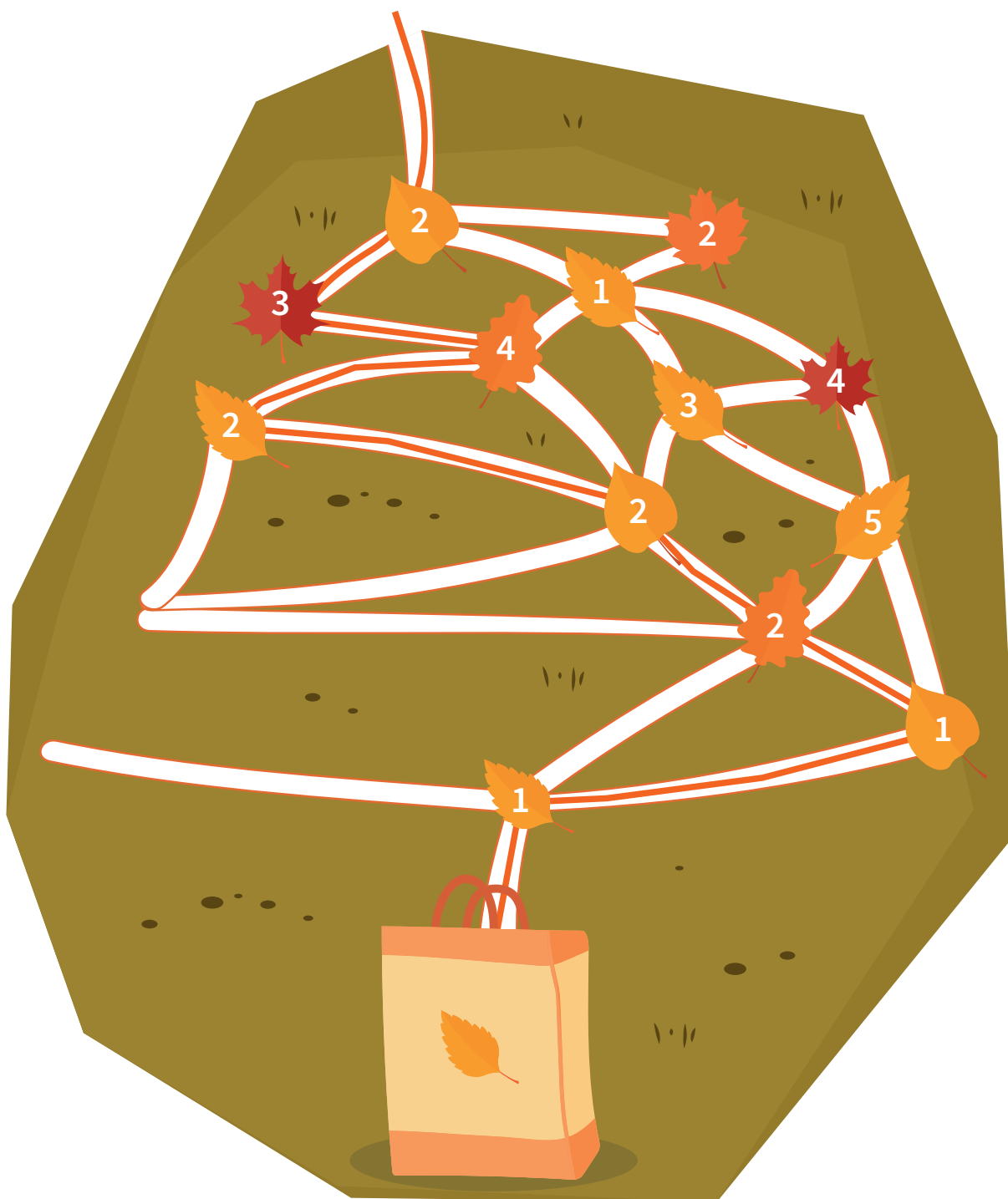


HIDDEN WORD

WIND

Logical continuation

Solution



Sudoku

Solution

6	2	3	7	4	8	9	1	5
7	1	4	2	9	5	6	8	3
8	9	5	1	3	6	4	7	2
2	5	9	3	1	7	8	6	4
4	8	7	6	5	9	2	3	1
3	6	1	4	8	2	7	7	9
1	3	8	9	7	4	5	2	6
5	4	6	8	2	1	3	9	7
9	7	2	5	6	3	1	4	8

4	9	7	8	5	2	6	3	1
2	5	1	6	4	3	9	8	7
8	3	6	7	9	1	4	5	2
5	8	9	4	1	6	7	2	3
7	6	2	5	3	9	1	4	8
1	4	3	2	7	8	5	9	6
9	7	4	3	6	2	8	1	5
3	1	8	9	5	7	2	6	4
6	2	5	1	8	4	3	7	9

Anagrams

Solution

K P M U P I N



P U M P K I N

T U N A M U



A U T U M N

S L E A V E



L E A V E S

A C D N L E



C A N D L E

N R O C A



A C O R N

L M E A P



M A P L E

P L E A P



A P P L E

F A L E



L E A F

Search and find

Solution



Secret code

Solution

	1	2	3	4	5
1	A	B	C	D	E
2	F	G	H	I	J
3	L	M	N	O	P
4	Q	R	S	T	U
5	V	W	X	Y	Z

The Peck Code

The peck code was used by prisoners to communicate secretly.

Each letter is located in a 5×5 grid:
The first peck indicates the row.
The second peck indicates the column.

CODE TO BE DECIPHERED

44 42 24 13 25 / 34 42 / 44 42 15 11 44

T R I C K O R T R E A T

REWRITE THE SENTENCE

TRICK OR TREAT

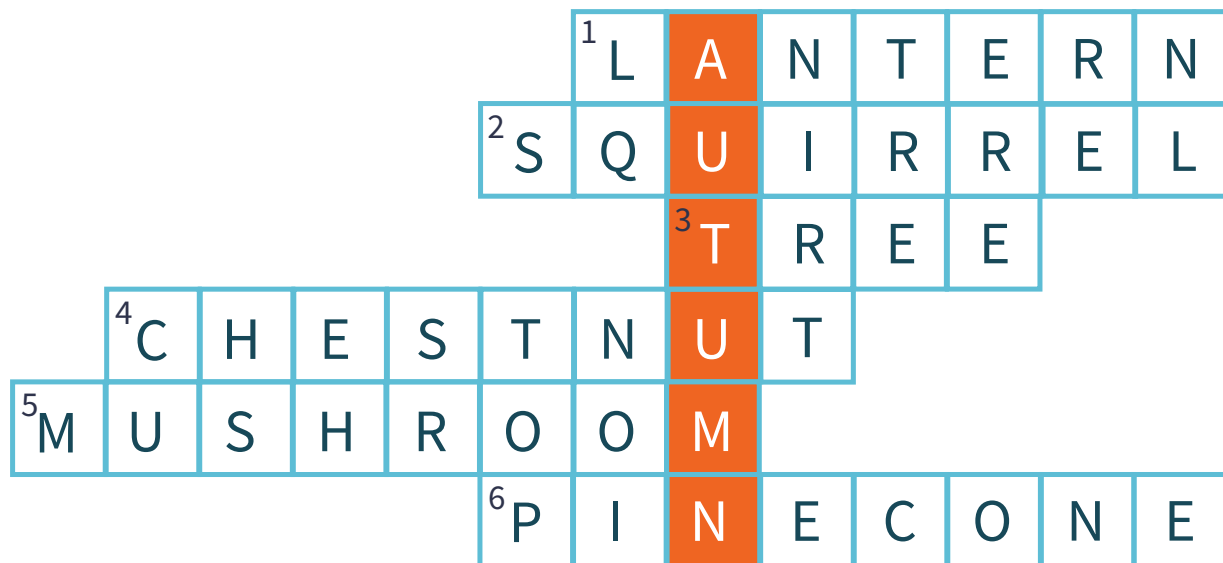
Solution

famileo

Secret word

Solution

1. Object that gives light in the dark, often made from a pumpkin
2. Small animal with a bushy tail, known for collecting nuts
3. Tall plant with leaves and branches where birds may nest
4. Brown nut, roasted and eaten warm during autumn
5. Small round fungus that grows in forests, sometimes edible
6. Woody cone from a pine tree, containing seeds



SECRET WORD

AUTUMN

...See you next month for a new edition...

